

Residents in the township utilize a multitude of community facilities throughout their lives including public schools, libraries, and emergency services, to name a few. The Community Facilities Profile analyzes the existing conditions and functional adequacy of community facilities in the area; this plan component evaluates the need for community facilities and services in the future, based upon the projected population growth, desired future land use patterns, and existing demand for services.

The Pennsylvania Municipalities Planning Code states that the municipal comprehensive plan must contain, "A plan for community facilities and utilities, which may include public and private education, recreation, municipal buildings, fire and police stations, libraries, hospitals, water supply and distribution, sewerage and waste treatment, solid waste management, storm drainage and flood plain management, utility corridors and associated facilities, and other similar facilities or uses."

This plan signals the direction that Conewago Township must take to ensure adequate community facilities are available to serve current and future residents. This plan will also look at how different community services influence community character, and the relationships that exist between community facilities and creating livable neighborhoods.

GOAL AND OBJECTIVES

Goal

Support appropriate community facilities and utilities that adequately serve residents and businesses in the township, in a systematic manner that supports current and future development.

Objectives

- Work with the Lower Dauphin School District to ensure that area youth are receiving a high quality education in a safe, supportive atmosphere.
- Work with utility providers to ensure that township residents have continuous access to high quality services.
- Work with the Dauphin County Emergency Management Agency to coordinate emergency responders in the township.
- Monitor and maintain existing and planned water and sewer infrastructure to ensure that cost effective, high quality services are provided for township residents in the service area.
- Evaluate the need for local police service in the township and explore cooperation with surrounding police departments.
- Encourage increased recycling.
- Implement the goals and objectives established in the Conewago Township Parks and Recreation Plan.

OVERVIEW OF KEY FINDINGS

This section revisits the information discussed in the Community Facilities Profile, and discusses other relevant studies that have been undertaken that pertain to community facilities in the township.

Community Facilities Profile

Residents of Conewago Township are served by a variety of community facilities and services that are described extensively in the Community Facilities Profile.

These facilities and services are located in Conewago Township, or in proximity to the township and include:

- The Lower Dauphin School District and Conewago Elementary School
- Colleges and universities
- The Conewago Township Municipal Building
- State police protection
- Fire protection and emergency services
- Refuse disposal and recycling
- Township road maintenance equipment
- Water system
- Sewerage system
- Parks and recreation
- Churches and faith based organizations

Community Public Meeting

- One of the major themes discussed at the community public meeting related to enhanced community facilities and utilities.
 - Specific concerns related to frequent power outages, the lack of high speed internet access, and the different prefix of phone numbers resulting in toll calls within the township.
 - Residents also expressed a need for improved coordination between emergency service providers, and an addressing project to ensure that emergency services personnel are able to find all residences in the township.
 - Meeting attendees also indicated that they need to know who emergency service providers are for different locations in the township, and additional assistance for seniors in the township is needed.
 - Funding community facilities and services was also expressed as a concern.
 - Strengths of the community related to community facilities included Conewago Trail, and the fact that the limited number of community facilities requires fewer taxes to maintain.

Other Relevant Studies

The following studies were considered in the development of the Conewago Township Comprehensive Plan.

■ Dauphin County Comprehensive Plan

- The Dauphin County Comprehensive Plan takes the position that the role of Dauphin County in community facilities, utilities, and services is primarily one of planning, advisory, and coordination. The County's planning responsibilities in solid waste management and stormwater management are required by state legislation, but in all

cases, implementation by ordinance or contract is handled at the local level. The following recommendations are outlined in the Dauphin County Comprehensive Plan:

- It is recommended that each municipality make its school district aware of any planned residential development so that the school district can comment on the availability of its facilities to meet the needs of any new students generated by each development. Each school district is encouraged to define the capacities of their schools and each municipality is encouraged to approve only residential developments that do not exceed the existing or planned capacities.
- Municipalities are encouraged to create regional forces to cover larger areas, including fire, ambulance, and police services.
- It is recommended that all local governments have an Act 537 Plan and update them as required.
- Adopt and implement stormwater management plans for all watersheds in Dauphin County. A stormwater management plan provides a mechanism for municipalities within a watershed to plan for and manage increased runoff associated with future development and land use changes. Encourage the adoption of municipal ordinances to implement Act 167 plans.
- A new Dauphin County water supply needs to be created that should encourage development where infrastructure exists and with available excess treatment capacity, rather than extending services into new areas and increasing costs to both the developer and the municipality/authority that operates the water treatment plant.
- Dauphin County is required to achieve and maintain a minimum recycling rate of 35% of all municipal waste and source-separated recyclable materials generated within the county.

INTERRELATIONSHIP OF COMMUNITY FACILITIES TO OTHER PLAN ELEMENTS

This chapter focuses on ensuring that adequate community facilities are available to meet the needs of the current and future populations of Conewago Township. Many times, community facilities and community character help to define the quality of life in the township. As such, this chapter is directly related to other elements of the comprehensive plan, including housing and land use. This section looks at these interrelationships and the ways in which they influence the provision of community facilities and the quality of life in the township.

Housing and the Economy

- As identified in the community public meeting, housing development has a direct impact on the community facilities and service providers in the township. New residents will demand that adequate services are available; therefore, it is pertinent that Conewago Township adequately plan for projected development and implement necessary community facilities improvements.
- Housing and economic development are also related to community facilities in terms of the amounts of services they use compared to the amounts they pay for services through taxes. Residential development requires more services than it pays for in taxes, whereas commercial and industrial development offset the cost for these services by using fewer services than they pay for in taxes. Therefore, it will be important for Conewago Township to ensure that there are adequate commercial and industrial establishments in the township to offset the costs associated with new residential development coming into the township.
- Residents of the township often associate themselves with their place of residence, or neighborhood. Community and neighborhood events, improvements that define

neighborhoods, as well as service clubs and organizations, can help to enhance the quality of life for residents and further create a sense of place.

Land Use and Transportation

- The use of the land influences the demand for community facilities, and conversely, the availability of community facilities can influence the ways in which land can be used.
- Land use and transportation also affect community facilities by having an influence on the placement of trails and walking paths, the impact on the school district and the connections between the school district, neighborhoods, and other destinations, the demand for and location of parks and recreational facilities, and the provision of water and sewer services.

COMMUNITY NEEDS ASSESSMENT

Educational Facilities

- Conewago Township is located in the Lower Dauphin School District (LDSD). Elementary school students in the township attend Conewago Elementary or Londonderry Elementary.
- Conewago Elementary School has the smallest capacity of the schools in the district. The flexible boundaries that the LDSD employs ensures that class sizes are kept at acceptable sizes in all of the schools. Although this helps to create an optimal learning environment, several students in Conewago Township are required to attend Londonderry Elementary School.
- It will be imperative that the Township maintain an open line of communication with the LDSD and inform the LDSD of planned residential growth so that it can adequately plan for educational facility improvements.
- There are also opportunities for the Township to work with the LDSD to involve students in the community and further integrate the visibility of the district in the community. The following represent specific opportunities that the Township and LDSD may consider to enhance the relationship between the LDSD and the Conewago Township community:
 - Consider offering a student government program where high school students from the township attend local government meetings as student representatives, junior supervisors, or junior planning commission members.
 - Continue to actively support the Communities that Care program and find ways to integrate Communities that Care activities in locations in the township.
 - Encourage the formation of extracurricular clubs and organizations that contribute to the community through community beautification and service projects.
 - Work with the LDSD to ensure use of the Conewago Elementary School facilities by the community when the building is not in use for school functions. Continued use of the building by area groups and organizations when it is available, would enable full utilization of this structure.

Conewago Township Municipal Building

- The Conewago Township Municipal Building is considered to be in good structural condition.
- It will be necessary for the Board of Supervisors to evaluate its adequacy as the township moves into the future, and determine if additional space is needed.

Police Protection

- Currently, the entire township is served by the Pennsylvania State Police. The adequacy of police service in the township as compared to the need for a joint police service should continue to be evaluated as the township moves into the future.

Fire Protection and Emergency Services

- There are no fire and emergency service providers located within the township, but the township receives service from five fire companies and several emergency services providers. Because of its location, response times can be lengthy in certain areas of the township.
- Conewago's geographic location also results in fire and emergency service providers coming from three different counties. This makes it difficult for residents to know who their primary responders are.
- Conewago Township should work with the Dauphin County Emergency Management Agency to ensure that adequate communications are maintained between the three counties so that residents of Conewago Township continue to receive adequate emergency and fire protection services.
- To increase awareness of the fire and emergency service providers' jurisdictions within the township, the township should work with the county to develop a map that could be distributed to residents or placed at the municipal building, or in a newsletter.
- The township should also communicate regularly with the service providers to gain an understanding of their volunteer and equipment needs, and assist in communicating these needs to township residents.
- As a long term strategy, the township may also consider the possibility of creating a fire company to be located within the township, or working with one of the existing service providers to determine if it is feasible to locate a satellite station in the township. This is considered a potential long term strategy to be evaluated as the need arises.

Refuse Disposal and Recycling

- Private companies and individuals are responsible for refuse collection and disposal through individual contracts with waste haulers. The township may consider a negotiated township-wide contract for waste removal. This could decrease costs for residents, encourage proper waste disposal, and limit the number of days that trash receptacles are placed on the street.
- The recycling center in the township is heavily used, and the Dauphin County Recycling Hotline and website provides information on proper ways to prepare recyclables. The township should increase awareness of the county's recycling program and encourage participation by township residents by regularly publishing information in the township newsletter.

Water System

- A detailed water resources plan is included in the Natural and Historic Resources Plan element. The township currently relies on private wells and public water in select areas, provided by a public utility. Public water, along with public sewer service may increase the amount of growth in the township.

Sewerage System

- Conewago Township adopted an Act 537 Sewage Facilities Plan in 1998, and the plan is currently being updated through the construction of Phase I and Phase II sewer in certain areas of the township. The township should review and update this plan as necessary.

- The township has also adopted an on-lot disposal system management ordinance that requires periodic maintenance and pumping of all systems in the township. The ordinance is currently considered to be very effective, but long-term effectiveness of the ordinance and remediation of problem areas should be monitored.

Parks and Recreation

- Conewago Township adopted a Parks and Recreation Plan in 2005. It is recommended that the township proceed with implementing the recommended actions set forth in the parks and recreation plan.
- Since the adoption of the plan, the township appointed an advisory Parks and Recreation Board. This board should annually review the parks and recreation plan and make recommendations to the Conewago Township Board of Supervisors when amendments are necessary.
- In addition to the acquisition and development of a centralized community park facility, the parks and recreation plan recommends the development of a series of interconnected greenways in the township to serve environmental and passive recreational purposes. **Map 11-1** shows proposed greenways along the Conewago Creek, Hoffer Run, and Iron Run, and the proposed location for the community park.

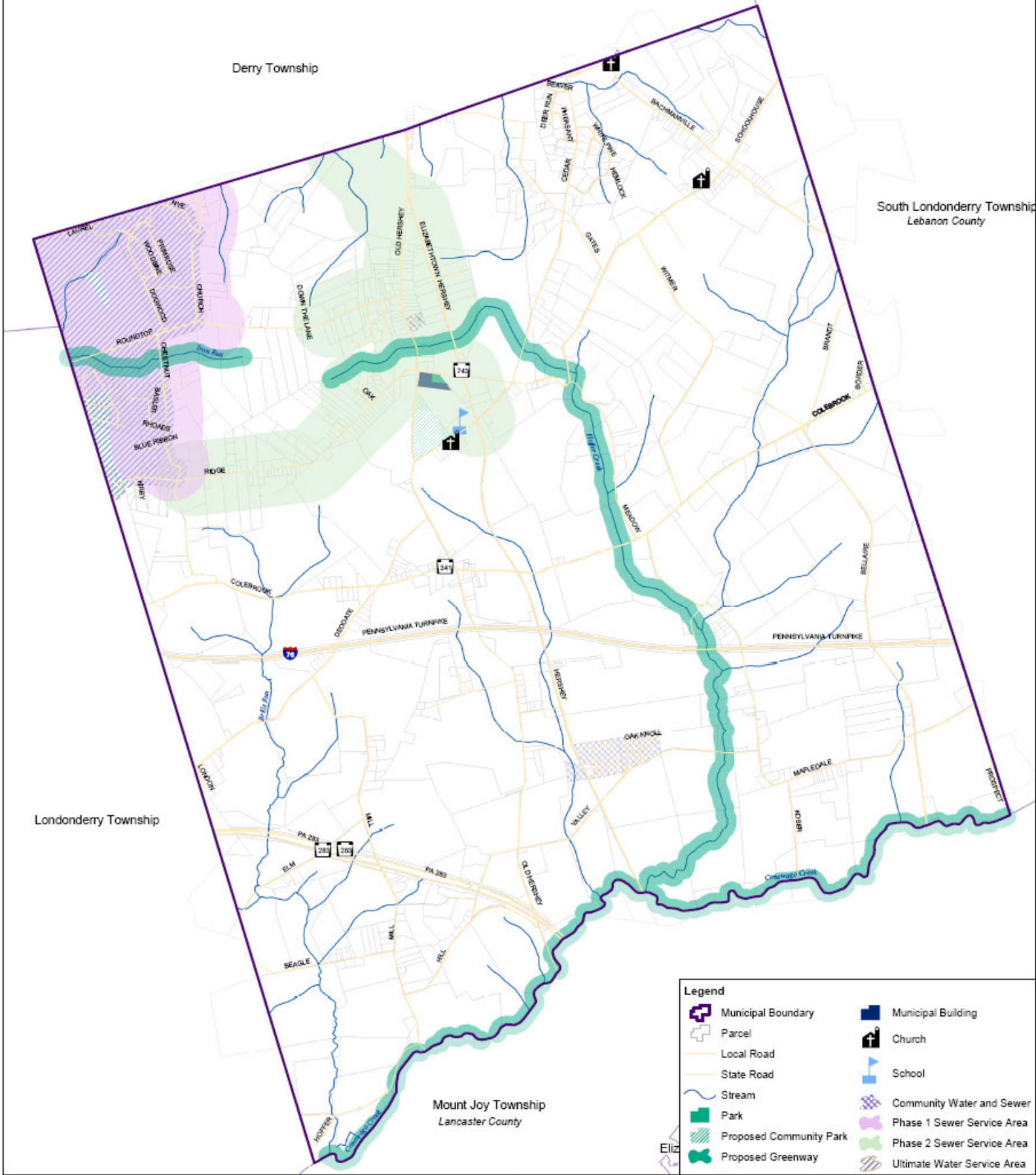
Community Organizations, Events, and Communication

- Although this may fall under the realm of ‘recreation’, this section is being considered separately due to the vast range of opportunities for organizations in the township.
- There are currently several organizations in the township for youth to participate in including athletic organizations and scouting organizations. These organizations enhance the quality of life in the township, and should be supported by the township. There may also be opportunities for these organizations to assist with specific projects or services in the township.
- Currently, there is a lack of senior and adult organizations and activities in the township. The township should consider implementing or working with surrounding municipalities to develop a transportation assistance program for seniors. A service organization that is geared towards assisting seniors with property maintenance and accessing daily needs may also be an ideal organization to encourage in the township.
- The township may also want to consider encouraging neighborhood associations or community groups. These groups add to the quality of life in a neighborhood and can help to increase the feeling of a sense of place for residents. Neighborhood groups may initiate activities such as neighborhood beautification, neighborhood watch groups, or social events.
- Currently, the PTO at Conewago Elementary School hosts the Conewago Country Fair in the fall of each year. Events such as these help to increase community and school pride and should continue to be supported by the township.
 - Should the Township be interested in offering recreational events or classes, the Conewago Elementary School may be an optimal location to hold such events, since there is not currently a community meeting or workshop space at the municipal building.
- Residents at the community public meeting also expressed a need for enhanced communication of service providers and organizations available to them in the township. The township may consider the following methods in increase awareness of the service providers.
 - Post information about the different service providers and organizations in the township newsletter.
 - Create and maintain a calendar of community events at the township building.

- Facilitate a quarterly meeting of fire and emergency service providers to understand their needs.
- Consider establishing an agricultural advisory board to communicate the needs of the farming community to the Board of Supervisors as they relate to agriculture, agricultural sustainability, transportation, safety, and various community facilities.
- Create a welcome packet to distribute to new residents that contains important community and safety information.
- Consider creating an official township website to convey a wealth of information to the community.

Utility Service Providers

- Several discussions at the community public meeting related to inadequate utility services in the township. Residents frequently experience power outages and high speed internet access is not available in all areas. There was also a complaint that related to long distance phone numbers within the township.
- The township has talked with power companies regarding the frequent power outages. The township may consider contacting the power companies again, if the problems continue, or filing a complaint with the Pennsylvania Public Utility Commission.
- Residents and businesses in the township may also consider investing in a personal generator, if power outages result in a tremendous inconvenience. Personal generators are now considered to be more affordable than they previously were.
- Developers may also consider the benefits and costs of burying utility lines underground.
 - Benefits of burying utility lines underground include increased reliability and improved aesthetics in the community.
 - Drawbacks include the high costs that are associated with burying overhead lines that are often paid by the homeowner. Additionally, overhead lines may decrease the frequency of power outages, but the length of time for repair could be extended. It is also important to note that power outages may not always stem from Conewago Township; therefore, burying utility lines may not fix all of the power outage problems.
- The township may also consider talking with the cable and high speed internet providers. Recent advances in technology should be coordinated with the future land use plan for the township to maximize the efficiency of service. High speed internet access should be available in areas where commercial and residential growth is being accommodated. In more rural and agricultural areas of the township, the costs to extend these services into these areas may outweigh the number of people that are served. Because these are rural areas, residents should be aware that the most recent advances in technology may not be available and that they will need to rely on current availability of service or alternative options such as satellite dishes.
- The township should also encourage adequate cell phone coverage in the populated areas of the township and along major transportation corridors.



Derry Township

South Londonderry Township
Lebanon County

Londonderry Township

Mount Joy Township
Lancaster County

Legend			
	Municipal Boundary		Municipal Building
	Parcel		Church
	Local Road		School
	State Road		Community Water and Sewer
	Stream		Phase 1 Sewer Service Area
	Park		Phase 2 Sewer Service Area
	Proposed Community Park		Ultimate Water Service Area
	Proposed Greenway		



Map 11-1
COMMUNITY FACILITIES PLAN



CONEWAGO TOWNSHIP COMPREHENSIVE PLAN
2008

PA State Plane South, NAD 1983
Base Map Source:
Copyright (c) 2005, Dauphin County GIS
Copyright (c) 2007, Tri-County GIS
Copyright (c) 2007, RETTEW Associates, Inc.

RETTEW

PROJECT NO. 05-01141-007

J:\0505-01141-007\050501_1_LandUse\050501_LandUse_Map11-1.mxd